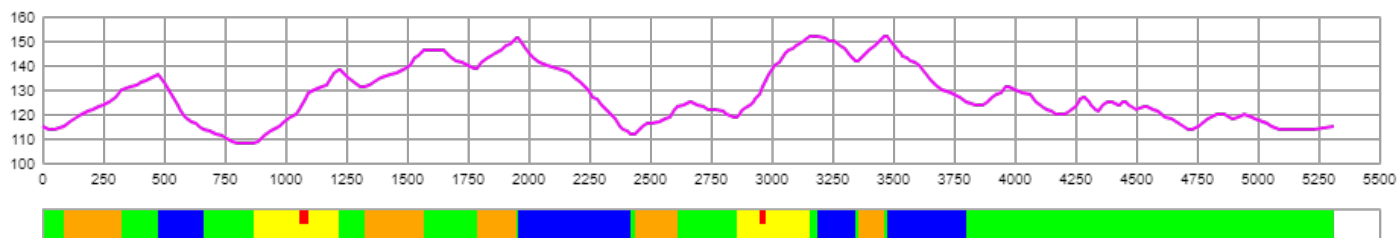


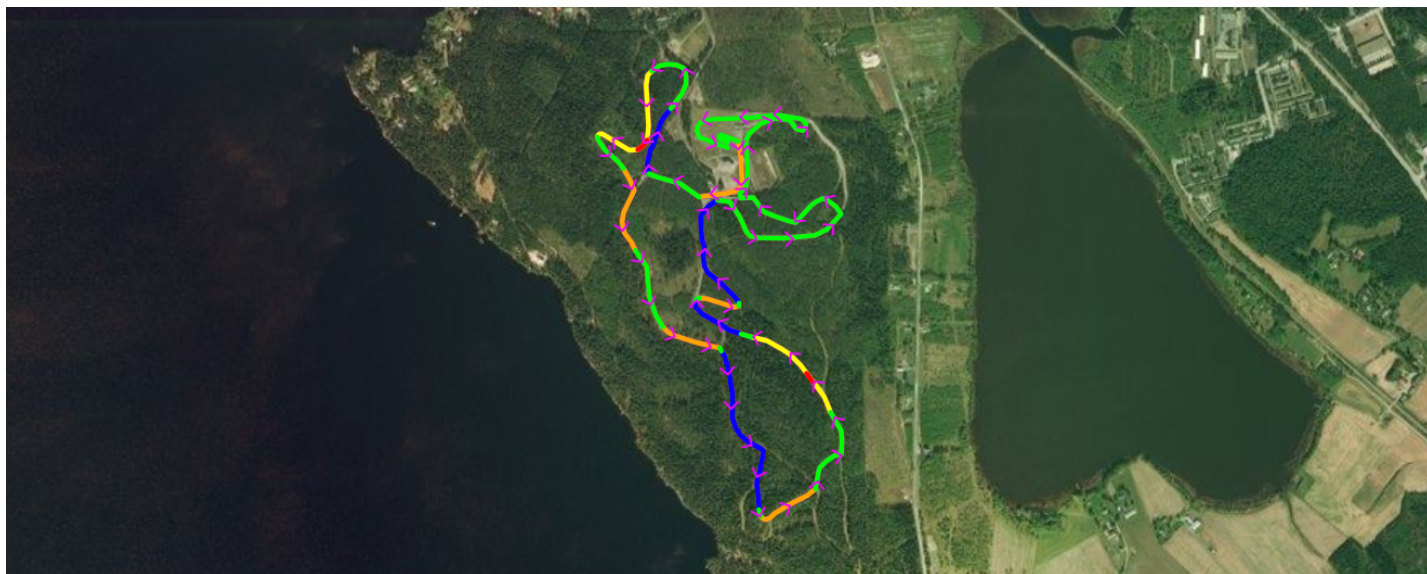


CERTIFICATE  
OF FIS HOMOLOGATED CROSS-COUNTRY COURSE  
FIS CROSS-COUNTRY COMMITTEE

Course length:	5,310m	Height difference (HD):	44m	Lowest point:	108m
Course category:	D	Maximum climb (MC):	33m	Highest point:	152m
		Total climb (TC):	164m		



A-climb B-climb C-climb descent undulated terrain



FIS Office

FIS Stamp

FIS Homologation  
Responsible

Date of Issue

Valid until