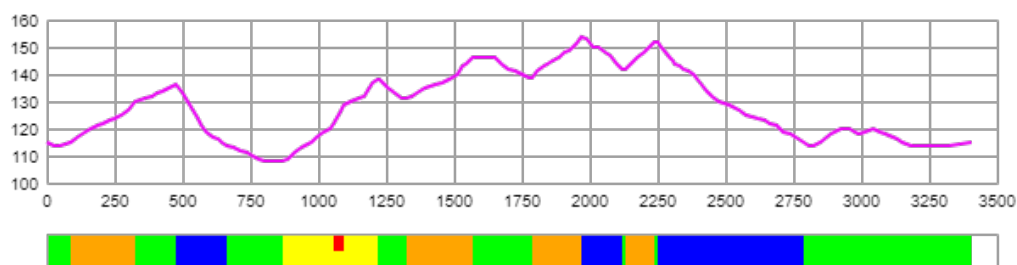


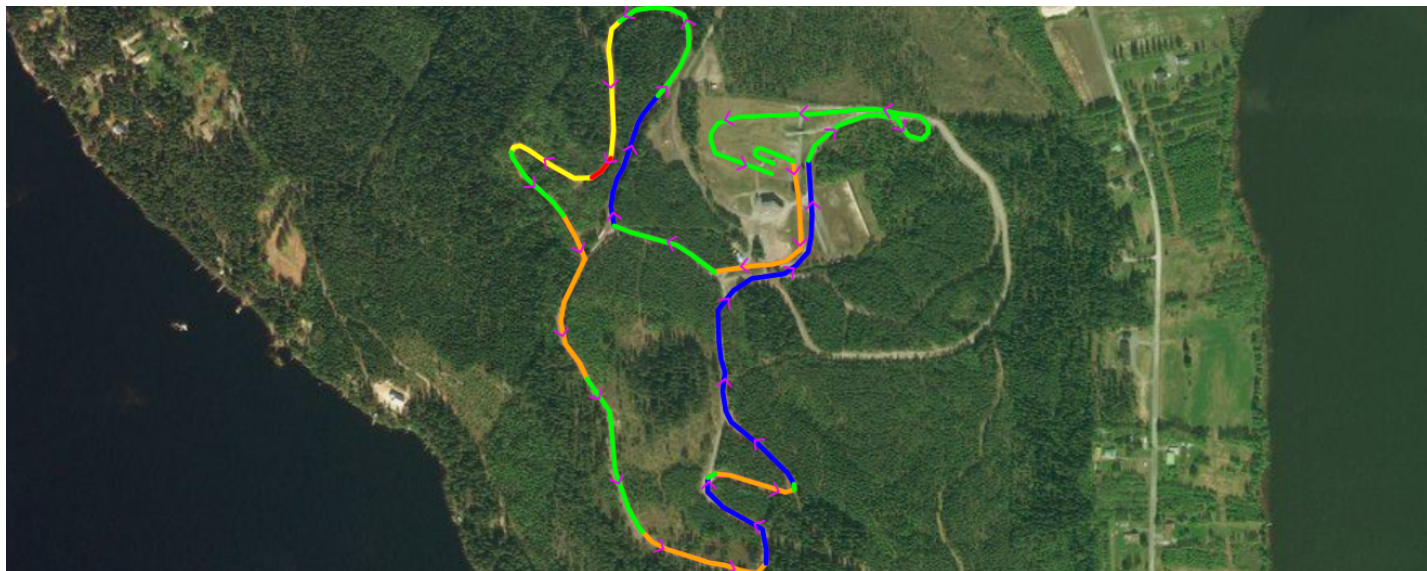


CERTIFICATE
OF FIS HOMOLOGATED CROSS-COUNTRY COURSE
FIS CROSS-COUNTRY COMMITTEE

Course length:	3,405m	Height difference (HD):	46m	Lowest point:	108m
Course category:	D	Maximum climb (MC):	30m	Highest point:	154m
		Total climb (TC):	101m		



A-climb B-climb C-climb descent undulated terrain



FIS Office

FIS Stamp

FIS Homologation
Responsible

Date of Issue

Valid until